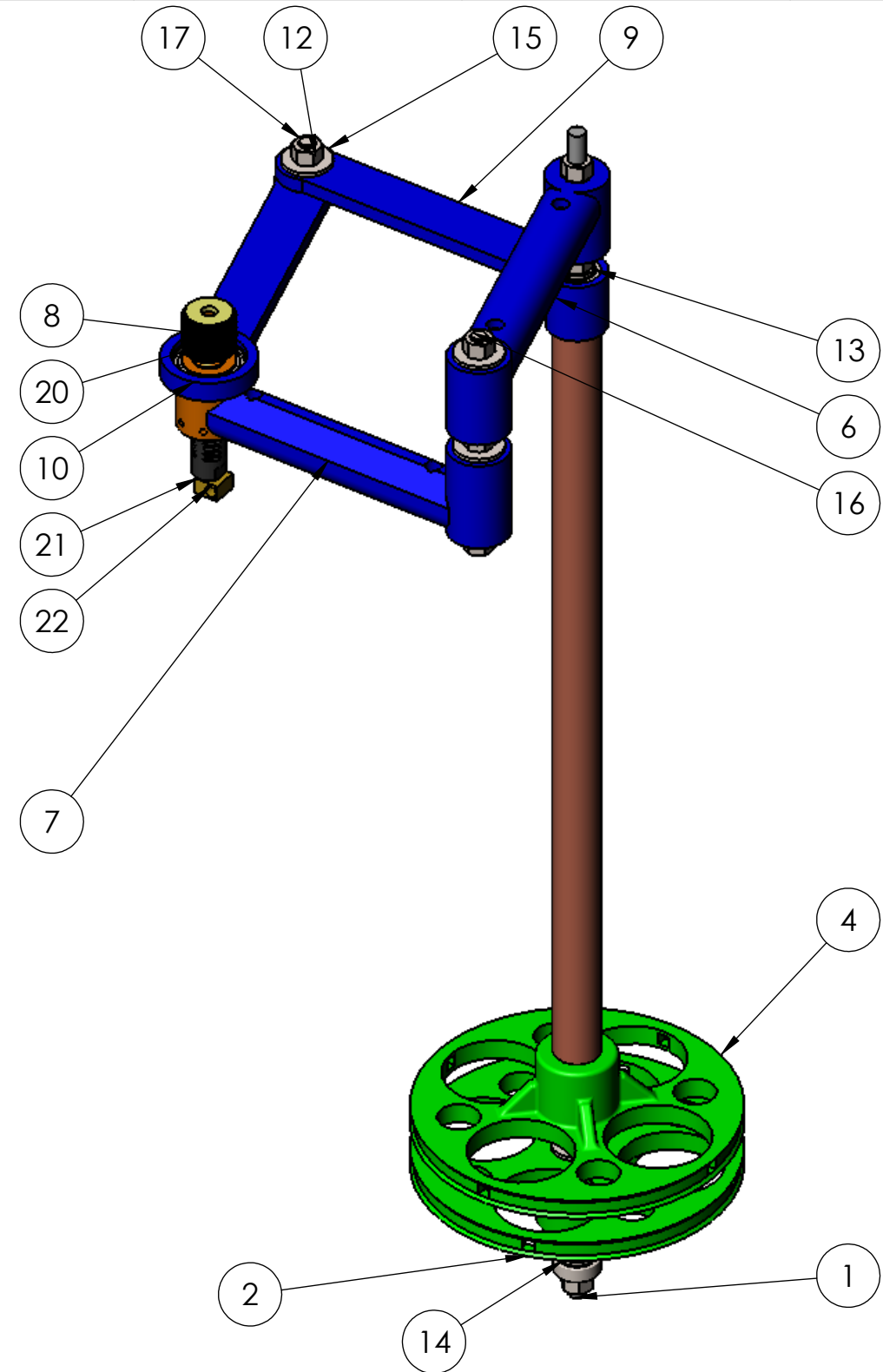
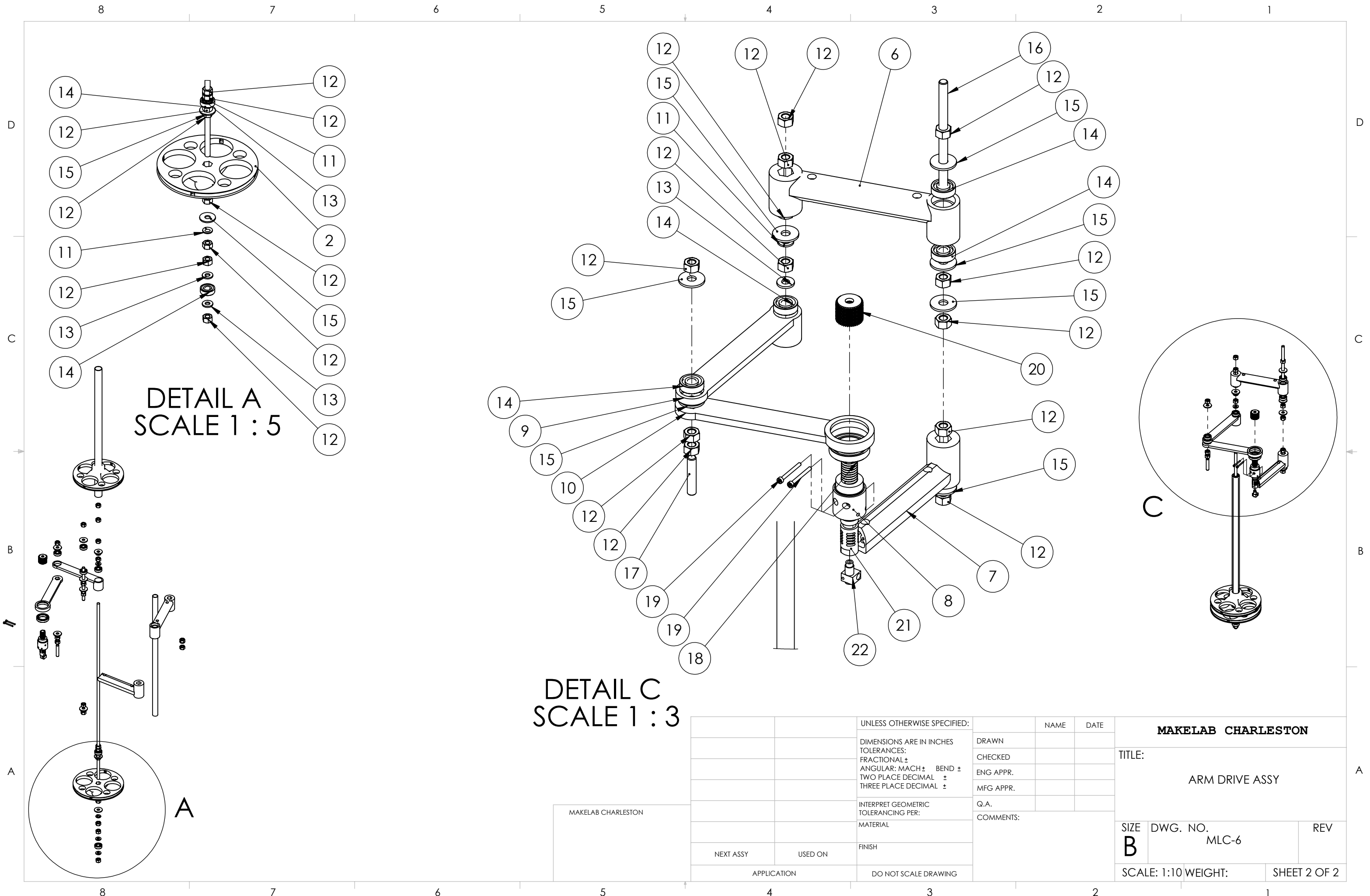


ITEM NO.	PART NUMBER	DESCRIPTION	QTY.
1	MLC-1-008	M8 ALL THREAD 650MM	1
2	MLC-1-0010	DRIVE WHEEL ROD	1
3	MLC-1-0026	CENTER COPPER PIPE	1
4	MLC-1-009	DRIVE WHEEL TUBE	1
5	MLC-1-007	3/4" COPPER TUBING	1
6	MLC-1-0016	Morgan_arm_PSI_a	1
7	MLC-1-0017	Morgan_arm_PSI_b	1
8	MLC-1-0018	MORGAN TOOLHEAD	1
9	MLC-1-0019	MORGAN THETA ARM A	1
10	MLC-1-0020	MORGAN THETA ARM B	1
11	Spring washer DIN 128 - A8		6
12	Hexagon Nut ISO 4034 - M8 - N		22
13	DIN 6902-A7.4		5
14	SKF - 608 - 8,SI,NC,8_68		6
15	Washer DIN 9021 - 8.4		9
16	AM -- M8 x 120 N		1
17	AM -- M8 x 40 N		1
18	SKF - 61805 - 22,SI,NC,22_68		1
19	B18.3.1M - 3 x 0.5 x 30 Hex SHCS -- 18NHX		2
20	MLC-1-030	TIGHTENING CAP	1
21	JHEAD	JHEAD	1
22	JHEAD NOZZLE		1



MAKELAB CHARLESTON

		UNLESS OTHERWISE SPECIFIED:	NAME	DATE	MAKELAB CHARLESTON
		DIMENSIONS ARE IN INCHES TOLERANCES: FRACTIONAL ± ANGULAR: MACH ± BEND ± TWO PLACE DECIMAL ± THREE PLACE DECIMAL ±	DRAWN		
		INTERPRET GEOMETRIC TOLERANCING PER:	CHECKED		SIZE B DWG. NO. MLC-6 REV
		MATERIAL	ENG APPR.		
NEXT ASSY	USED ON	FINISH	MFG APPR.		
APPLICATION		DO NOT SCALE DRAWING	Q.A.		
			COMMENTS:		



DETAIL A
SCALE 1 : 5

DETAIL C
SCALE 1 : 3

MAKELAB CHARLESTON

		UNLESS OTHERWISE SPECIFIED:		NAME	DATE	MAKELAB CHARLESTON	
		DIMENSIONS ARE IN INCHES		DRAWN			
		TOLERANCES:		CHECKED		TITLE:	
		FRACTIONAL ±		ENG APPR.		ARM DRIVE ASSY	
		ANGULAR: MACH ± BEND ±		MFG APPR.		SIZE	
		TWO PLACE DECIMAL ±		Q.A.		DWG. NO.	
		THREE PLACE DECIMAL ±		COMMENTS:		MLC-6	
		INTERPRET GEOMETRIC TOLERANCING PER:				REV	
		MATERIAL				SCALE: 1:10	
		FINISH				WEIGHT:	
NEXT ASSY	USED ON	DO NOT SCALE DRAWING				SHEET 2 OF 2	
APPLICATION							